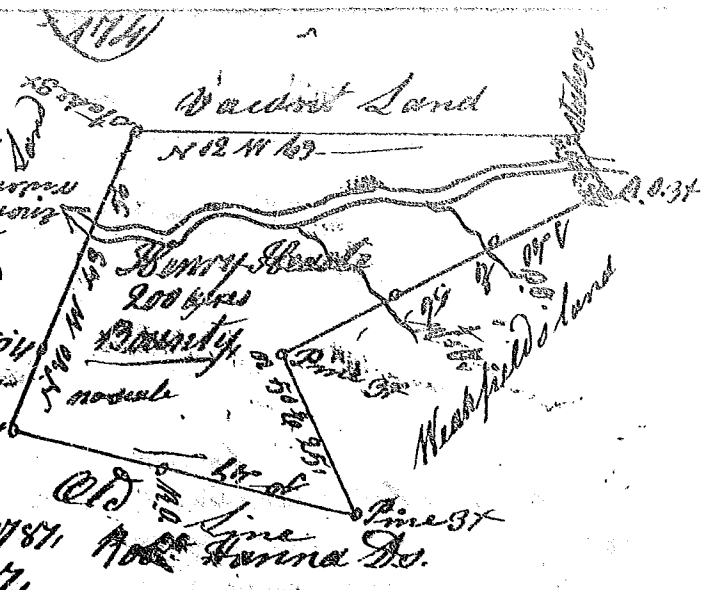


State of S. Carolina

Pursuant to a warrant from John Thomas Com. of locations of Saluda I have admeasured and laid out unto Henry Hebble a tract of 200 acres of land on the bounty as a soldier, on both sides of Enoree river in Laurens County, Spartanburg County, having such shape and marks as the above Plat represents

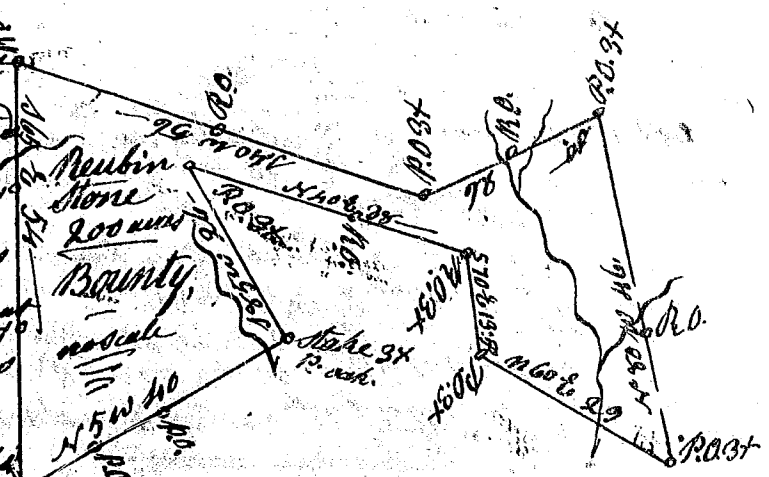
Survey, 20th Jan'y 1787, Recorded the 22nd February 1787,



State of S. Carolina

Pursuant to a warrant from John Thomas Com. of locations of Saluda I have admeasured & laid out unto Neubin Stone a tract of 200 acres of land on the bounty as a soldier in 3rd Regiment on a branch of Ferguson's Creek in Spartanburg County, having such shape and marks as the above Plat represents

Survey, 19th Jan'y 1787, Recorded 22nd febr'y 1787, Robt. Hanna D.



State of S. Carolina Laurens County

Pursuant to a warrant from John Thomas Com. of loc. Dated 30th Jan'y 1787 I have admeasured and laid out unto James Nupel a tract of 200 acres of land in Laurens County on a branch of Neborn's Creek waters of Saluda River, bounded on all sides as above mentioned, and hath such shape and marks as the above Plat represents, survey, 2nd febr'y 1787

Recorded 22nd febr'y 1787, J. Saxon

